

# NURTURE NETWORK



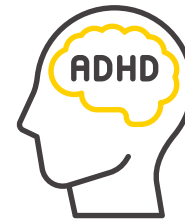
CHILD-FOCUSED NURTURING INCLUSIVE AMBITIOUS **October** 2024



**AWARENESS IS KEY!**

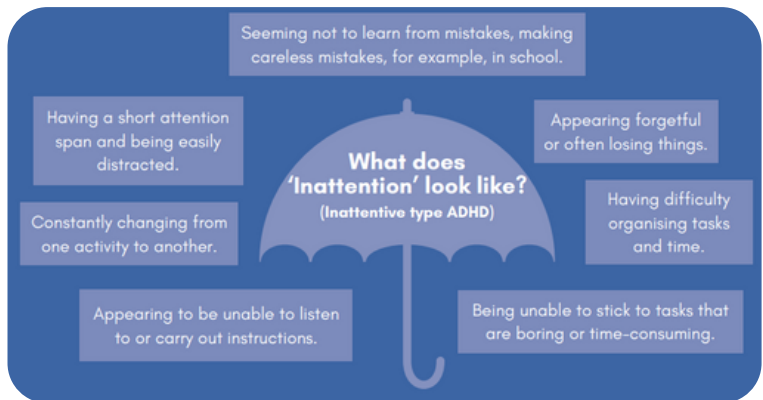
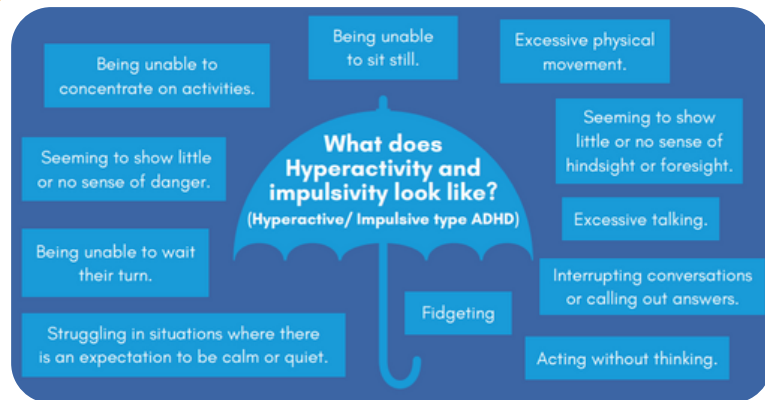
## October is ADHD Awareness Month!

October is dedicated to raising awareness, challenging misconceptions, and celebrating the unique strengths of individuals with ADHD. This year's theme, "Awareness is Key!", urges us to go beyond simply understanding ADHD and take concrete steps toward building more inclusive environments for everyone.



ADHD is a lifespan condition, that impacts upon people to varying degrees throughout their lives. The way in which ADHD impacts upon a person may change during their lifetime.

Anyone with a diagnosis of ADHD can be described as being "neurodiverse", meaning there is a difference in the way in which the brain functions.



If you have concerns, talk to your child's teacher or the Special Needs and Disability Coordinator (SENDCO).

Describe your experience of your child's characteristics at home and ask if this is evident in school. It is important to ensure that the conversation at this stage is wide-ranging, for example, not just focused upon your child's behaviour which is often their response to broader difficulties in different situations.

## KEY CONTACTS



01226 644876 (option 2)  
barnsley.communitypaediatrics1@nhs.net



01226 787234  
sendiass@barnsley.gov.uk



0800 0345 340  
infofis@barnsley.gov.uk



[https://barnsley.cloud.servelc-synergy.com/Synergy/Local\\_Offer/](https://barnsley.cloud.servelc-synergy.com/Synergy/Local_Offer/)



Scan the QR code to access Barnsley's Local Offer.

What is A Local Offer? A local offer gives Children and Young People with Special Educational Needs and Disabilities (SEND), and their Families information about any support and services that may be available to them.

# WHAT'S ON IN YOUR LOCAL AREA



## Central Area Holiday Free Activities

Booking is required for all activities, please book via the QR code at the bottom. Please remember to book early to avoid disappointment. Places are for children & young People aged 10-14 years and will be allocated initially to those already attending our clubs.

Monday 28<sup>th</sup> October 2024 11am – 1pm

**Nature Trail and Lunch** – Join us for a mindfulness walk and a Maccy D's Happy Meal! YMCA To Provide.

Location: Meet at McDonalds, Wombwell Lane, Stairfoot Barnsley S70 3NT

Tuesday 29<sup>th</sup> October 2024 11:30am – 2:30pm

**Shop Cook and Eat!** – Come and make a spooktacular feast!

Location: YMCA Barnsley, Blucher Street, S70 1AP

Tuesday 29<sup>th</sup> October 2023, 4:00pm – 5:30pm

**Halloween Spooky Arts and Crafts Fun**

Location: Kendray & Worsbrough Family Centre, 39 Overdale Ave, Worsborough, S70 4BD

Wednesday 30<sup>th</sup> October 2024, 2:30pm-4:30pm

**Pumpkin Carving Competition** - Get into the Halloween spirit carving some spooky pumpkins

Location: YMCA Allotment Shaw Lane, Barnsley, S70 6HN

Thursday 31<sup>st</sup> October 2024, 4pm – 6pm

**Halloween Party** - Show us your frightening moves at the Halloween Party

Location: YMCA Barnsley, Blucher Street, S70 1AP

Friday 1<sup>st</sup> November 2024, 12:00pm – 2:00pm

**Bonfire crafts, scratch arts decorating biscuits and more!!**

Location: St. John's Church, Green Road, Dodworth, S75 3RT



Central Area Council  
Central, Dodworth, Kingstone, Stairfoot, Worsbrough



For information and Activity/Club consent forms please contact us on 01226 214165  
E: info@ymcabarnsley.org.uk 1 Blucher Street, Barnsley, S70 1AP



### BARNLSLEY LIBRARIES

## HALLOWEEN CRAFTS

29 October 2024

10:00am until 12:00pm

Library @ the Lightbox

4 to 100 years

Bring your little spooks along to our drop-in Halloween Craft session at the Lightbox. No need to book, just call in and create!



Education Inclusion Services  
Hearing Support

BARNLSLEY  
Metropolitan Borough Council

Deaf Friends – let's get together to paint some pumpkins!

Come and join us on Sunday 27<sup>th</sup> October 2024 at Heart of Handmade – 2-4pm!



Booking in advance is essential – we have limited space. Please use the link on the Deaf Friends Facebook group or visit: <https://bit.ly/DeafFriendsPumpkin>  
**£10 per painter.**

Parents, please write in the box at the end of the booking form how many people will support/watch your child.

We look forward to seeing your children and their siblings at:

20 The Arcade S70 2QN  
(Drinks and snacks will be provided!)



Any questions please contact Becky on 07808 735481 or Melissa on 07917 492904

**Happy Halloween FROM WIGFIELD FARM!**

**Trick or Treat**

**BOO!**

Pumpkin Picking: from Sat 12th - Thurs 31st Oct.  
Halloween Trail  
Spooky photo ops.  
Colouring competition  
Halloween Activity Sheet

Kids get **FREE ENTRY** if in **FULL fancy dress!** (Sat 12th - Thurs 31st Oct.)

Spooky treats in the café!



## HERE'S WHAT'S HAPPENING FOR SPOOKY SEASON!

- Pumpkin picking Sat 12th - Thurs 31st Oct.
- Halloween trail
- Spooky photo opportunities
- Spooky treats in the café
- Colouring competition
- Halloween activity sheet

AND kids get **FREE ENTRY** if in **FULL fancy dress** (not just t-shirt or mask ) from Sat 12th-Thurs 31st!



# KEY CONTACTS



01226 644876 (option 2)  
barnsley.communitypaediatrics1@nhs.net



01226 787234  
sendiass@barnsley.gov.uk



0800 0345 340  
infofis@barnsley.gov.uk



[https://barnsley.cloud.servelc-synergy.com/Synergy/Local\\_Offer/](https://barnsley.cloud.servelc-synergy.com/Synergy/Local_Offer/)