



NEWSLETTER

OAKWELL RISE
Primary Academy

Friday 11th July 2025

A MESSAGE FROM OUR EXECUTIVE PRINCIPAL

Well done to all of our Y6 children who this week who have proved just how excellent we know they are. Some of the best results we have ever seen - not only for passing their SATs examinations but for fulfilling their personal goals across the curriculum.

We are all so proud of each and every child and know they will all follow their dreams for the next stage of their lives.

Mrs Jenkins

A MESSAGE FROM OUR HEAD OF SCHOOL

It is the end of another sunny week and almost the end of the year. This week we had our Summer Fair, which was a huge success.

Thank you to everyone who attended and enjoyed the ice-creams, donkeys and tombola fun.

Have a great weekend everyone.



LIKE AND FOLLOW US ON FACEBOOK

Mrs Faxon

ATTENDANCE

Our target is 97%

RECEPTION	99.2%
YEAR 1	98.8%
YEAR 2	99.3%
YEAR 3	100%
YEAR 4	100%
YEAR 5	97.3%
YEAR 6	96.7%

Amazing attendance this week! Huge well done to everyone! One more week to go.

**SCHOOL ATTENDANCE
THIS WEEK IS 98.8%**

NUMBER OF LATES THIS WEEK	18
LOSS OF LEARNING (MINS)	180

LOCKE PARK

On Thursday 17th July our Y1-Y6 children will be heading out for a fantastic day at Locke Park.

They'll be making the most of the lovely green spaces with games such as rounders/cricket and having time to explore the playarea.

They will all enjoy an ice-cream/ice lolly.

Please ensure your child brings a rucksack to carry their lunch and water bottle, wear suncream and bring a hat!

WORKBOOKS - BRING A CARRIER BAG

Children's workbooks will be sent home during the final week. We kindly ask that you send a carrier bag in with your child on Monday 14th July so their books can be taken home when ready.



IMPORTANT

LAST DAY OF SCHOOL
18TH JULY 2025
SCHOOL WILL FINISH AT 1PM.



RETURN OF SCHOOL BOOKS

Please return all school reading books by **Wednesday 16th July** to ensure they can be checked and prepared for the new school year.



REMINDER

There are no afterschool clubs next week.

GET INTO TEACHING

WITH JOSIE THIRKELL INSTITUTE

01226 720758

@traintoteach@jtioe.org.uk

www.jtioe.org.uk



WELLSPRING
We Make A Difference

OAKWELL RISE PRIMARY ACADEMY

PRESENTS

SUMMER SPECTACULAR

WEDNESDAY 16TH JULY, 2025 AT 09:00 AM

VENUE: SCHOOL HALL

ooo

1ST HALF - PERFORMANCES BY KS2
AND ROCKSTEADY

INTERVAL AT APPROX 10A.M.

2ND HALF - PERFORMANCES BY RECEPTION, KS1
AND WHOLE SCHOOL

TICKETS = £1 AVAILABLE VIA ARBOR



ALL WELCOME FOR EITHER 1ST HALF, 2ND HALF OR ALL OF THE SHOW.

Y6 Prom Night

PARTY

a night to remember

15TH JULY 2025

5 - 6.30PM

@ OAKWELL RISE

Is your child registered for SCHOOL MILK?

Child
UNDER 5

Every child under the age of five is entitled to free school milk. Simply register your child online.



Child
OVER 5

Every child over the age of five is entitled to milk at a subsidised cost of around £20 per term. Register your child and pay online.

Children in receipt of benefits-based free school meals are eligible for free school milk. Speak to the school for further information.

Free milk for under 5s is funded by the Department of Health and milk for over 5s is subsidised by DEFRA.

REGISTER YOUR CHILD TODAY

Register online
www.coolmilk.com



Need help?
Send us a message
at www.coolmilk.com/contact
or give us a call on 0800 321 3248

FIND US ON SOCIAL MEDIA - SEARCH COOLMILKSCHEME

NHS
South West
Yorkshire Partnership
NHS Foundation Trust

It is time for your child's yearly flu vaccination!

Please complete one consent form for each of your child/children here, please complete the form even if you do not wish for your child/children to receive the vaccine:

www.barnsleysais.co.uk/Forms/Flu



SCAN ME

Your unique code for Oakwell Rise Primary is BN143107

Please complete the form even if you do not want your child to have the vaccination.

If you experience any problems, please contact the team on
barnsleysais@swyt.nhs.uk

With all of us in mind.

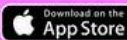


BARNSELEY CITY INNOVACY SUMMER HOLIDAY TIMES

STARTS
23RD JULY

MON 11AM - 5PM
TUES 11AM - 5PM
WED 11AM - 5PM
THUR 11AM - 5PM
FRI 11AM - 5PM
SAT 10AM - 6PM
SUN 11AM - 5PM

BOOK VIA MOBILE APP



SUMMER holiday CAMPS

28TH JULY -
22ND AUGUST

09.30-14.30
LONGER SESSIONS
AVAILABLE IF
ENOUGH INTEREST

FREE & PAID
PLACES AVAILABLE
09.30 - 14.30
£15

FUN & CREATIVE INDOOR &
OUTDOOR ACTIVITIES
WITH HEALTHY FOOD
PROVIDED

LOCATIONS: WORSBROUGH COMMON PRIMARY, UPPERWOOD PRIMARY
HOLY TRINITY CARLTON, OAKWELL PRIMARY

Tel: 07377094993
www.grassrootsportsacademy.co.uk

Healthy holidays BARNSELEY

KipMcGrath ENGLISH AND MATHS TUTORING
Kip In Centre Online

SCHOOL'S OUT...
KIP'S IN!

SUMMER

AT KIP

Join our school holiday
programme to give your child a
head start for the next academic term

Tuesday and Wednesday mornings 29th July - 27th August

9:30am - 10:30am

10:45am - 11:45am

9:30am - 11:45am
Extra curricular activities

Book a free assessment at kipmcgrath.co.uk/barnsleynorth



Parent/Carer Notice



**WE ARE
HIRING!**

Cleaning Vacancies



We will shortly be employing cleaners directly into our Wellspring Cleaning Team and will have cleaning opportunities available across our Academies over the coming months. Please register your interest by completing an application via the QR code or link below...

<https://mynewterm.com/jobs/629632645/EDV-2024-WATC-00402>

Our Offer

- Work within fantastic buildings and spaces
- Team work with supportive colleagues and Leaders
- Full Training programme offered
- Offer of Flexible Hours, Term Time working options, and no weekend work as standard
- Wellbeing initiatives, and staff incentives
- Uniform provided
- Variety everyday



For more information about the role, please contact:
Jenny Ellis, Email: j.ellis@wellspringacademies.org.uk
Tel: 07395 369070

SUMMER DATES

20 JUNE

Y1/2 H

27 JUNE

Non-Uniform

30 JUNE

Non-Uniform

2 JULY

Residential

3 JULY

Y1 Opera House Performance

4 JULY

Nursery Sports Day

7-8 JULY

Transition Days

7 JULY

Y5 Wild Day

7 JULY

Reception Wild Day

8 JULY

Y2 Field

9 JULY

Y3/4 Loughborough Geography Trip

10 JULY

Y5/6 D. Loughborough Trip

10 JULY

Sports Awards

14 JULY

Y1/2 Wild Day

SUMMER DATES

15–16 JULY

Y6 Barnsley Academy Transition Days

15 JULY

Y6 Prom

16 JULY

Music Showcase

17 JULY

Whole School Locke Park



18 JULY



Y6 Leavers Assembly

18 JULY

School Finishes at 1pm



SUMMER LUNCH MENU

 OAKWELL RISE Primary Academy		<h2>MENU</h2> W/C- 09.06 / 30.06				 WELLSPRING Catering Team
WEEK ONE		MONDAY	TUESDAY	WEDNESDAY	THURSDAY	FRIDAY
MAIN COURSE		Crispy BBQ Chicken	Roast Gammon			
VEGETARIAN						
SERVED WITH						
DESSERT						
JACKET POTATO						
SANDWICH						

 OAKWELL RISE Primary Academy		<h2>MENU</h2> W/C- 16.06 / 07.07				 WELLSPRING Catering Team
WEEK TWO		MONDAY	TUESDAY	WEDNESDAY	THURSDAY	FRIDAY
MAIN COURSE		Pepperoni Pizza	All Day Breakfast	Roast Chicken & Stuffing	Hot Dog	Fish Fingers
VEGETARIAN		Cheese and Tomato Pizza	Vegetarian All Day Breakfast	Quorn Fillet & Stuffing	Vegan Hot Dog	Cheesy Bean Bake
SERVED WITH		Shoestring Fries and Vegetable Selection	Hash Brown and Baked Beans	Roast Potatoes, Gravy and Medley of Vegetables	Finger Roll, Baby Potatoes and Daily Vegetables	Oven Chips & Garden Peas
DESSERT		Peaches and Ice Cream	Strawberry Delight	Chocolate Chip Cookie	White Chocolate Cheesecake	Oaty Flapjack
JACKET POTATO		Fresh Baked Potato with Cheddar Cheese, Tuna or Baked Beans	Fresh Baked Potato with Cheddar Cheese, Tuna or Baked Beans	Fresh Baked Potato with Cheddar Cheese, Tuna or Baked Beans	Fresh Baked Potato with Cheddar Cheese, Tuna or Baked Beans	Fresh Baked Potato with Cheddar Cheese, Tuna or Baked Beans
SANDWICH		Cheese, Ham, or Tuna Sandwich	Cheese, Ham, or Tuna Sandwich	Cheese, Ham, or Tuna Sandwich	Cheese, Ham, or Tuna Sandwich	Cheese, Ham, or Tuna Sandwich

Available Daily - Cheese & Crackers / Salad selection / Whole Fresh Fruit / Yoghurts

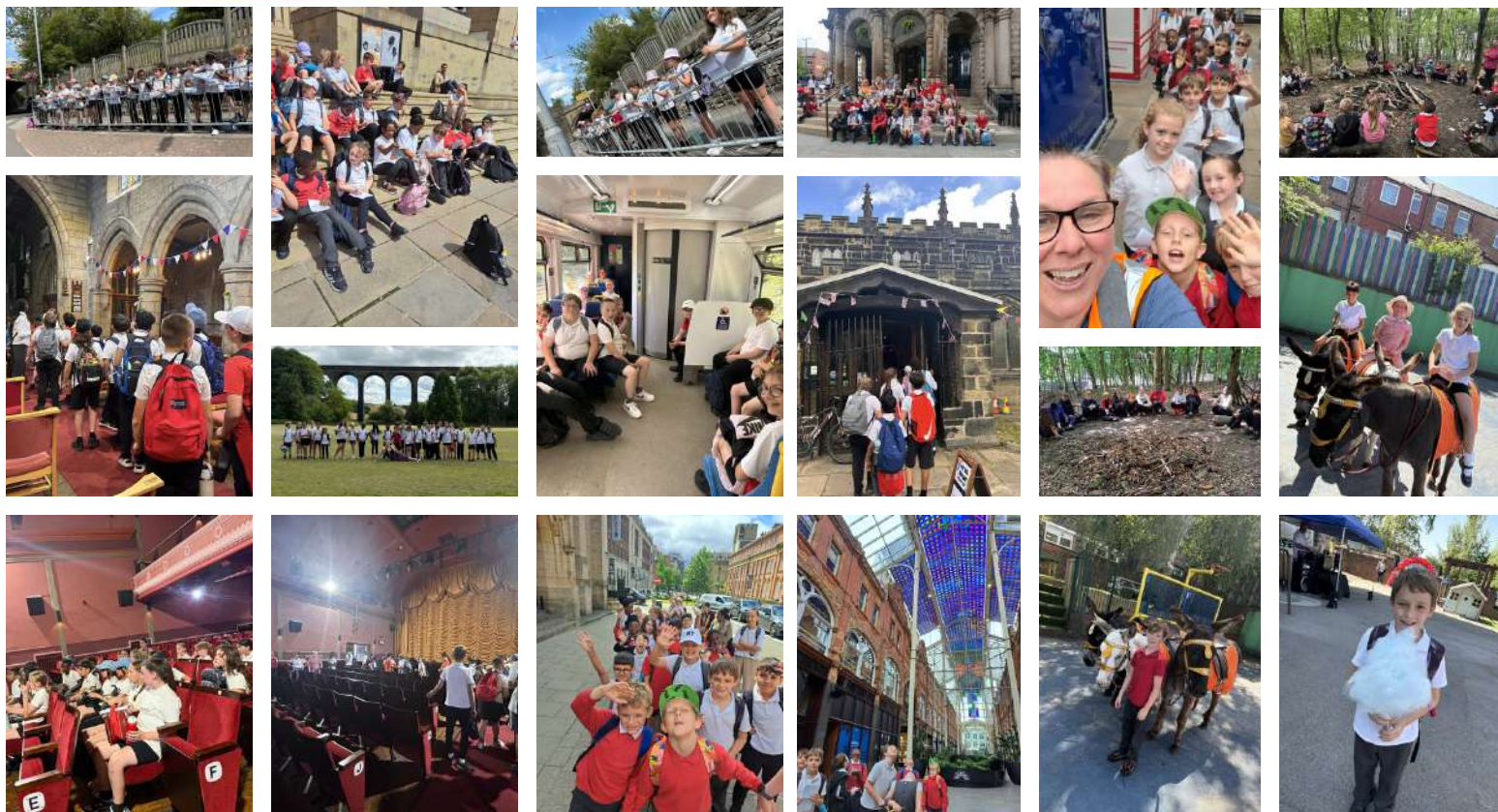
PLEASE NOTE: If your child has a dietary need or a lifestyle food preference, please contact the school office or complete the Dietary Information Form on the school website.

 OAKWELL RISE Primary Academy		<h2>MENU</h2> W/C- 02.06 / 23.06 / 14.07				 WELLSPRING Catering Team
WEEK THREE		MONDAY	TUESDAY	WEDNESDAY	THURSDAY	FRIDAY
MAIN COURSE		Cheesy Chicken Pasta	Chicken Curry	Pork Sausages	Beef Burger	Fish Fingers and Oven Chips
VEGETARIAN		Cheese and Tomato Pizza	Vegetable Curry	Vegetarian Sausages	Southern Fried Quorn Burger	Veggie Fingers
SERVED WITH		Garlic Dough Balls and Vegetable Selection	Rice & Naan Bread	Mashed Potatoes, Gravy and Medley of Vegetables	Seasoned wedges and Carrots and Sweetcorn	Oven Chips & Garden Peas
DESSERT		Waffle and Ice Cream	Chocolate and Coconut Cake	Choc Ice	Banana Muffin	Chocolate Brownie
JACKET POTATO		Fresh Baked Potato with Cheddar Cheese, Tuna or Baked Beans	Fresh Baked Potato with Cheddar Cheese, Tuna or Baked Beans	Fresh Baked Potato with Cheddar Cheese, Tuna or Baked Beans	Fresh Baked Potato with Cheddar Cheese, Tuna or Baked Beans	Fresh Baked Potato with Cheddar Cheese, Tuna or Baked Beans
SANDWICH		Cheese, Ham, or Tuna Sandwich	Cheese, Ham, or Tuna Sandwich	Cheese, Ham, or Tuna Sandwich	Cheese, Ham, or Tuna Sandwich	Cheese, Ham, or Tuna Sandwich

Available Daily - Cheese & Crackers / Salad selection / Whole Fresh Fruit / Yoghurts

PLEASE NOTE: If your child has a dietary need or a lifestyle food preference, please contact the school office or complete the Dietary Information Form on the school website.

OH Snap! This Week's Snapshots



30 HOUR NURSERY FUNDING

Oakwell Rise Primary Academy is delighted to offer 30 hour funding for children either starting in Nursery or continuing their Nursery education into the next academic year, 2025/2026.

We are able to offer the following:

- 30 hr funded places
- 15 hr funded places

The Nursery day will run as follows:

- AM session – 08:30 – 11:30
- PM session – 12:00 – 15:00

For the full time Nursery children, they will be an additional 30 minutes of lunchtime where children will need to be provided with a packed lunch from home. The lunch period will be inclusive within the offer and no further charges will be made.

Admissions to Nursery will be in order of the Date of Birth, regardless of whether you require 30 hrs or 15hrs. If you wish to apply for a 30hr funded place, you need to apply online at <https://www.gov.uk/get-tax-free-childcare> to receive an 11 digit code.

When you have received an 11 digit code please provide this to the school office by the 1st December for January intake.

Inspiring today, making a difference tomorrow



OAKWELL RISE
Primary Academy

We are:
Child Focused
Nurturing
Inclusive
Ambitious

