



# NEWSLETTER

OAKWELL RISE  
Primary Academy

Friday 4th July 2025

## A MESSAGE FROM OUR EXECUTIVE PRINCIPAL

A huge moment of pride this week has to be when some of the Oakwell children sang and danced to their hearts content alongside Opera North. What an experience for all involved.

With only two weeks between now and the summer continue to keep your eyes on the newsletter for dates and final special events.

*Mrs Jenkins*

## A MESSAGE FROM OUR HEAD OF SCHOOL

Another sunny week at Oakwell, with some stand out moments for our children. Some of our UKS2 children have been to Hesley Wood on residential, enjoying all kinds of outdoor activities. Year 4 took part in the Opera North performance at Barnsley Civic - such an amazing evening for all involved. We have end the week with Nursery taking part in their Sports Day. Have a lovely weekend everyone.



LIKE AND FOLLOW US ON FACEBOOK

*Mrs Faxon*

## ATTENDANCE

Our target is 97%

RECEPTION	98.5%
YEAR 1	96.2%
YEAR 2	94.9%
YEAR 3	94.3%
YEAR 4	99.2%
YEAR 5	99.2%
YEAR 6	98.6%

Only two weeks to go! Let's keep it up.

### SCHOOL ATTENDANCE THIS WEEK IS 97%

NUMBER OF LATES THIS WEEK	26
LOSS OF LEARNING (MINS)	298

## IMPORTANT

**LAST DAY OF SCHOOL**  
**18<sup>TH</sup> JULY 2025**  
**SCHOOL WILL FINISH AT 1PM.**



### MEAL CHANGES

Tuesday - Hot Dog

Thursday - All Day Breakfast

### TRANSITION DAYS

Monday 7<sup>th</sup> & Tuesday 8<sup>th</sup> our children will participate in 2 transition 'Moving Up' mornings, where they will spend time in their new classrooms and new teachers.

### UPCOMING TRIPS

Reminder please login to your Arbor account and make your payment for any upcoming trips you child has.

The list of upcoming events is below.



## Summer Fair at Oakwell Rise

Get ready for our fun-filled Summer Fair on Tuesday 8<sup>th</sup> July starting at 1:30 PM.

Parents are welcome to sign their children out from class to enjoy the fair. Please note that there will be no after-school clubs on this day.

The fair promises a wide array of attractions, including:

Donkey rides  
Inflatables  
Refreshments  
Tombola  
Face painting  
And much more!

## GET INTO TEACHING

WITH JOSIE THIRKELL INSTITUTE

01226 720758

@traintoteach@jtioe.org.uk

www.jtioe.org.uk

WELLSPRING  
We Make A Difference

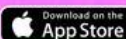


# BARNSELEY CITY INNOVACITY SUMMER HOLIDAY TIMES

STARTS  
23RD JULY

MON 11AM - 5PM  
TUES 11AM - 5PM  
WED 11AM - 5PM  
THUR 11AM - 5PM  
FRI 11AM - 5PM  
SAT 10AM - 6PM  
SUN 11AM - 5PM

BOOK VIA MOBILE APP



# SUMMER holiday CAMPS

28<sup>TH</sup> JULY -  
22<sup>ND</sup> AUGUST

09.30-14.30  
LONGER SESSIONS  
AVAILABLE IF  
ENOUGH INTEREST

**FREE & PAID  
PLACES AVAILABLE**  
09.30 - 14.30  
**£15**

**FUN & CREATIVE INDOOR &  
OUTDOOR ACTIVITIES  
WITH HEALTHY FOOD  
PROVIDED**

**LOCATIONS:** WORSBROUGH COMMON PRIMARY, UPPERWOOD PRIMARY  
HOLY TRINITY CARLTON, OAKWELL PRIMARY

Tel: 07377094993  
[www.grassrootsportsacademy.co.uk](http://www.grassrootsportsacademy.co.uk)

Healthy holidays BARNSELEY

# Y6 Prom PARTY Night

*a night to remember*

15TH JULY 2025

5 - 6.30PM

@ OAKWELL RISE



## Parent/Carer Notice



**WE ARE  
HIRING!**

## Cleaning Vacancies



We will shortly be employing cleaners directly into our Wellspring Cleaning Team and will have cleaning opportunities available across our Academies over the coming months. Please register your interest by completing an application via the QR code or link below...

<https://mynewterm.com/jobs/629632645/EDV-2024-WATC-00402>

### Our Offer

- Work within fantastic buildings and spaces
- Team work with supportive colleagues and Leaders
- Full Training programme offered
- Offer of Flexible Hours, Term Time working options, and no weekend work as standard
- Wellbeing initiatives, and staff incentives
- Uniform provided
- Variety everyday



For more information about the role, please contact:  
Jenny Ellis, Email: [j.ellis@wellspringacademies.org.uk](mailto:j.ellis@wellspringacademies.org.uk)  
Tel: 07395 369070

# SUMMER DATES

- 3 JUNE Residential Meeting
- 4 JUNE V4 Copper Gallery Trip
- 4 JUNE V4 Varkhina Sculpture Park
- 5 JUNE V4 Laser Tag Reward Trip
- 5 JUNE Poetry Day
- 10 JUNE V4 Varkhina Sculpture Park
- 11 JUNE V4 & V7 Mid Day
- 12 JUNE V6 Harborton Farm Visit
- 17 JUNE V2 Varkhina Sculpture Park
- 19 JUNE V6 Cullivore
- 19 JUNE V5 Varkhina Sculpture Park
- 23 JUNE K04 Varkhina Wildlife Park
- 24 JUNE K02 Music Festival
- 25 JUNE Sports Day Oakhill

# SUMMER DATES

20 JUNE

A L E H

27 JUNE

Non Uniform

30 JUNE

Non Uniform

2 JULY

Residential

3 JULY

7 Opera North Performance

4 JULY

Nursery Sports Day

7-8 JULY

Transition Days

7 JULY

Y6 Wild Day

7 JULY

Reception Wild Day

8 JULY

Summer Fair

9 JULY

Y3/4 Leeds Geography Trip

10 JULY

Y5/6 Penistone Trip

10 JULY

Sports Awards

14 JULY

Y1/2 Wild Day

# SUMMER DATES

**15-16 JULY**

**Y6 Barnsley Academy Transition Days**

**15 JULY**

**Y6 Prom**

**16 JULY**

**Music Showcase**

**17 JULY**

**Whole School Locke Park**

**18 JULY**

**Y6 Leavers Assembly**

**18 JULY**

**School Finishes at 1pm**

# SUMMER LUNCH MENU



OAKWELL RISE  
Primary Academy

W/C- 09.06 / 30.06

## MENU



WELLSPRING  
Catering Team

WEEK ONE	MONDAY	TUESDAY	WEDNESDAY	THURSDAY	FRIDAY
MAIN COURSE	Pork Sausage Roll	Crispy BBQ Chicken Wrap	Roast Gammon	Beef Lasagne	Fish Fingers and Oven Chips
VEGETARIAN	Vegan Roll	Vegetarian Chilli	Quorn Fillet	Vegetable Lasagne	Quorn Nuggets
SERVED WITH	Crispy Potatoes and Vegetable Selection	Seasonal Wedges and Salad	Roast Potatoes, Gravy and Medley of Vegetables	Garlic Bread and Carrots	Oven Chips & Garden Peas
DESSERT	Chocolate Ice Cream Roll	Raspberry Bun	Fruit Jelly	Lemon Shortbread Biscuit	Chocolate Delight
JACKET POTATO	Fresh Baked Potato with Cheddar Cheese, Tuna or Baked Beans	Fresh Baked Potato with Cheddar Cheese, Tuna or Baked Beans	Fresh Baked Potato with Cheddar Cheese, Tuna or Baked Beans	Fresh Baked Potato with Cheddar Cheese, Tuna or Baked Beans	Fresh Baked Potato with Cheddar Cheese, Tuna or Baked Beans
SANDWICH	Cheese, Ham, or Tuna Sandwich	Cheese, Ham, or Tuna Sandwich	Cheese, Ham, or Tuna Sandwich	Cheese, Ham, or Tuna Sandwich	Cheese, Ham, or Tuna Sandwich

Available Daily - Cheese & Crackers / Salad selection / Whole Fresh Fruit / Yoghurts

PLEASE NOTE: If your child has a dietary need or a lifestyle food preference, please contact the school office or complete the Dietary Information Form on the school website.



OAKWELL RISE  
Primary Academy

W/C- 16.06 / 07.07

## MENU



WELLSPRING  
Catering Team

WEEK TWO	MONDAY	TUESDAY	WEDNESDAY	THURSDAY	FRIDAY
MAIN COURSE	Pepperoni Pizza	All Day Breakfast	Roast Chicken & Stuffing	Hot Dog	Fish Fingers
VEGETARIAN	Cheese and Tomato Pizza	Vegetarian All Day Breakfast	Quorn Fillet & Stuffing	Vegan Hot Dog	Cheesy Bean Bake
SERVED WITH	Shoestring Fries and Vegetable Selection	Hash Brown and Baked Beans	Roast Potatoes, Gravy and Medley of Vegetables	Finger Roll, Baby Potatoes and Daily Vegetables	Oven Chips & Garden Peas
DESSERT	Peaches and Ice Cream	Strawberry Delight	Chocolate Chip Cookie	White Chocolate Cheesecake	Oaty Flapjack
JACKET POTATO	Fresh Baked Potato with Cheddar Cheese, Tuna or Baked Beans	Fresh Baked Potato with Cheddar Cheese, Tuna or Baked Beans	Fresh Baked Potato with Cheddar Cheese, Tuna or Baked Beans	Fresh Baked Potato with Cheddar Cheese, Tuna or Baked Beans	Fresh Baked Potato with Cheddar Cheese, Tuna or Baked Beans
SANDWICH	Cheese, Ham, or Tuna Sandwich	Cheese, Ham, or Tuna Sandwich	Cheese, Ham, or Tuna Sandwich	Cheese, Ham, or Tuna Sandwich	Cheese, Ham, or Tuna Sandwich

Available Daily - Cheese & Crackers / Salad selection / Whole Fresh Fruit / Yoghurts

PLEASE NOTE: If your child has a dietary need or a lifestyle food preference, please contact the school office or complete the Dietary Information Form on the school website.



OAKWELL RISE  
Primary Academy

W/C- 02.06 / 23.06 / 14.07

## MENU



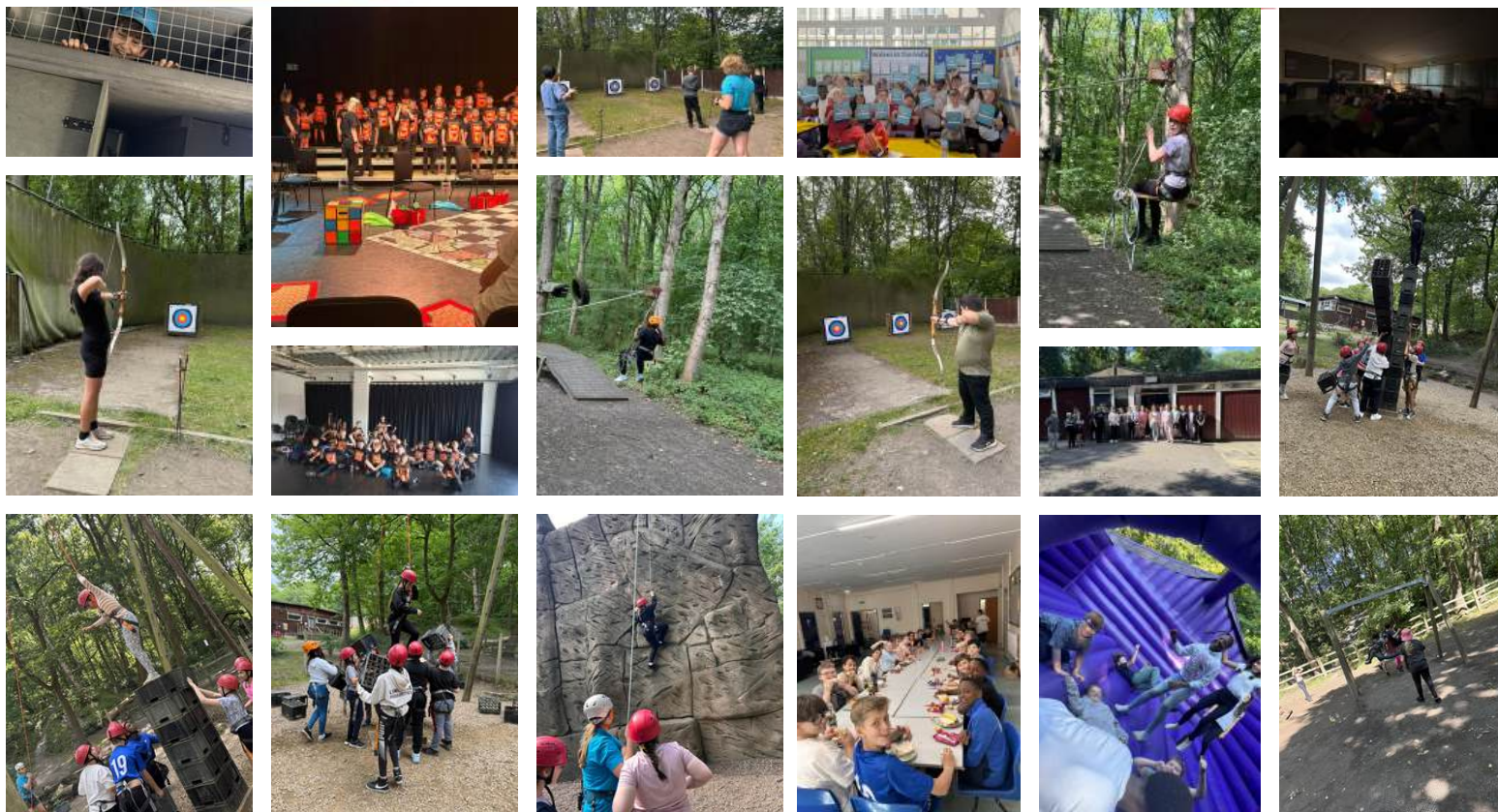
WELLSPRING  
Catering Team

WEEK THREE	MONDAY	TUESDAY	WEDNESDAY	THURSDAY	FRIDAY
MAIN COURSE	Cheesy Chicken Pasta	Chicken Curry	Pork Sausages	Beef Burger	Fish Fingers and Oven Chips
VEGETARIAN	Cheese and Tomato Pizza	Vegetable Curry	Vegetarian Sausages	Southern Fried Quorn Burger	Veggie Fingers
SERVED WITH	Garlic Dough Balls and Vegetable Selection	Rice & Naan Bread	Mashed Potatoes, Gravy and Medley of Vegetables	Seasoned wedges and Carrots and Sweetcorn	Oven Chips & Garden Peas
DESSERT	Waffle and Ice Cream	Chocolate and Coconut Cake	Choc Ice	Banana Muffin	Chocolate Brownie
JACKET POTATO	Fresh Baked Potato with Cheddar Cheese, Tuna or Baked Beans	Fresh Baked Potato with Cheddar Cheese, Tuna or Baked Beans	Fresh Baked Potato with Cheddar Cheese, Tuna or Baked Beans	Fresh Baked Potato with Cheddar Cheese, Tuna or Baked Beans	Fresh Baked Potato with Cheddar Cheese, Tuna or Baked Beans
SANDWICH	Cheese, Ham, or Tuna Sandwich	Cheese, Ham, or Tuna Sandwich	Cheese, Ham, or Tuna Sandwich	Cheese, Ham, or Tuna Sandwich	Cheese, Ham, or Tuna Sandwich

Available Daily - Cheese & Crackers / Salad selection / Whole Fresh Fruit / Yoghurts

PLEASE NOTE: If your child has a dietary need or a lifestyle food preference, please contact the school office or complete the Dietary Information Form on the school website.

# OH Snap! This Week's Snapshots



## 30 HOUR NURSERY FUNDING

Oakwell Rise Primary Academy is delighted to offer 30 hour funding for children either starting in Nursery or continuing their Nursery education into the next academic year, 2025/2026.

We are able to offer the following:

- 30 hr funded places
- 15 hr funded places

The Nursery day will run as follows:

- AM session – 08:30 – 11:30
- PM session – 12:00 – 15:00

For the full time Nursery children, they will be an additional 30 minutes of lunchtime where children will need to be provided with a packed lunch from home. The lunch period will be inclusive within the offer and no further charges will be made.

Admissions to Nursery will be in order of the Date of Birth, regardless of whether you require 30 hrs or 15hrs. If you wish to apply for a 30hr funded place, you need to apply online at <https://www.gov.uk/get-tax-free-childcare> to receive an 11 digit code.

When you have received an 11 digit code please provide this to the school office by the 1st December for January intake.



OAKWELL RISE  
Primary Academy

We are:  
Child Focused  
Nurturing  
Inclusive  
Ambitious

Inspiring today, making a difference tomorrow

